



PO Box 21748
Juneau, AK 99802-1748
www.akfolkfest.org

Return Service Requested

NON-PROFIT
ORGANIZATION
U.S. POSTAGE
PAID
Juneau, AK
Permit #194

September 2014 Newsletter

41st Annual
Alaska Folk Festival
April 6-12, 2015

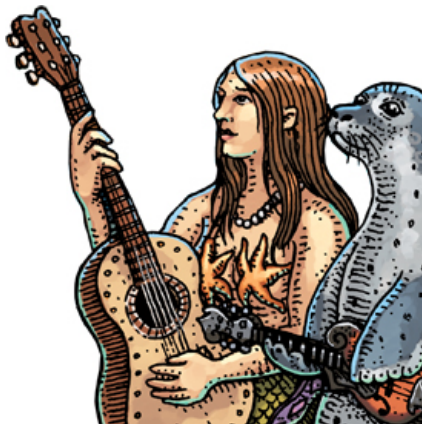
MARK YOUR CALENDARS FOR THE FALLTOBERFEST FUNDRAISER!

Join the Alaska Folk Festival and KRNN for a ticketed all-ages fall concert and folk music party on **October 3rd & 4th at the Rockwell Ballroom**. Two whole evenings of live music, with tickets at \$20 for one night or \$30 for both, you won't want to miss out! Starting at 7pm on both nights, Friday night features **Tramwreck**, the **Overby Family Band**, and **Honky Tonk Habit** and Saturday will feature **Rumblefish**, **Todd Grebe & Cold Country**, and **The Great Alaska Bluegrass Band**.

Tickets will be available at all the usual places and please check back on the AFF website and facebook page for more information.

Miss out on last year's amazing festival merchandise? Our merchandise last year sold like hot-cakes and we've heard from a lot of members that they wish they could still get their hands on the 40th festival items. **We're doing a re-print for FallToberFest only!** A limited run of shirts, hoodies, posters, etc. And continuing our new process from last festival, members will receive a 10% discount on all merchandise!

We'll also be in need of volunteers for this event! If you're interested, please email us at info@akfolkfest.org. All volunteers get in free!



Featuring



Todd Grebe & Cold Country



The Overby Family Band

Board Changes

This last spring we said goodbye to Jamie Brown who has served the board faithfully for nine years. Jamie's love of the festival and dedication to quality and detail has made him an invaluable resource. Thankfully he has agreed to continue volunteering his time managing the festival's website as well as several other tasks from Hawaii! We wish him all the best!

Please welcome Paul Disdier! Paul has been a long-time member and lover of the festival and we are thrilled to have him step up to assist the board with his insight and passion for music.



The AFF board currently has an open seat with 2 years left in the seat term. We're looking for interested, passionate folk festival lovers to join us! Send an email to Erin@akfolkfest.org with any questions.

Treasurer's Report

The Alaska Folk Festival provides 7 days of great music and charges no admission. Magic? Costs for hall rentals, guest artists, sound

production, program printing, and other festival expenses run to about \$45-50,000 each year. The festival relies on member contributions and merchandise sales, along with program adds, to generate needed funds. The festival does not seek and has not received major corporate sponsorship; the festival belongs to its 700 members, to the musicians who play, and to its enthusiastic audience. With no paid staff, the festival relies on legions of volunteers to get the work done. THANKS SO MUCH TO ALL OF YOU WHO CONTINUE TO MAKE THE FESTIVAL HAPPEN.

The festival is on sound financial footing at this time. Contributors should remember that the Alaska Folk Festival is a 501(c)3 tax exempt organization, EIN #92-0098258. Contributions to AFF are deductions for income tax purposes. I hope that you will continue to support YOUR festival. Contact Bob Schroeder, 907 209 5049, for more financial information or if you wish to make a special contribution.

Memberships

*This year we hit a new record for brand new members who signed up during the festival—
152!*

As mentioned in the treasurer's report, this festival belongs to you and your continued support is what keeps us dancing, playing, listening, grooving, and having a great old time.

